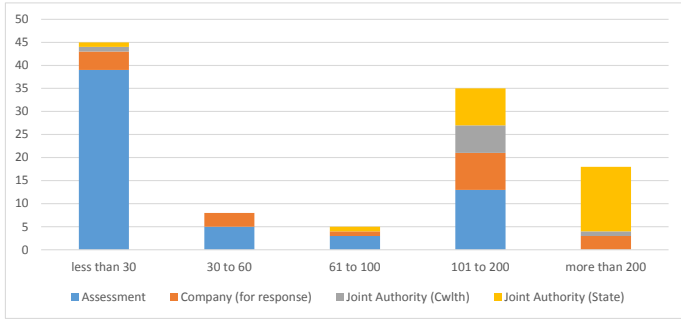


# NOPTA Dashboard Report - February 2015

## Applications in Progress

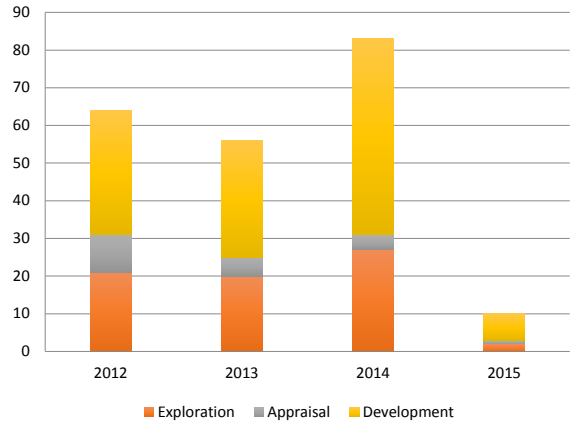


## Data Submissions Outstanding February

| Activities           | Less than 30 | 30 to 60 | 61 to 100 | 101 to 200 | more than 200 | Total |
|----------------------|--------------|----------|-----------|------------|---------------|-------|
| All Activities       | 8            | 7        | 9         | 1          | 8             | 33    |
| All Wells            | 1            | 7        | 0         | 0          | 0             | 8     |
| Wells (Basic)        | 1            | 0        | 0         | 0          | 0             | 1     |
| Wells (Interp)       | 0            | 7        | 0         | 0          | 0             | 7     |
| All Surveys          | 7            | 0        | 9         | 1          | 8             | 25    |
| New Surveys (Basic)  | 7            | 0        | 7         | 1          | 8             | 23    |
| New Surveys (Interp) | 0            | 0        | 2         | 0          | 0             | 2     |

Trend for compliance with data submission requirements is improving.

## Wells Completed

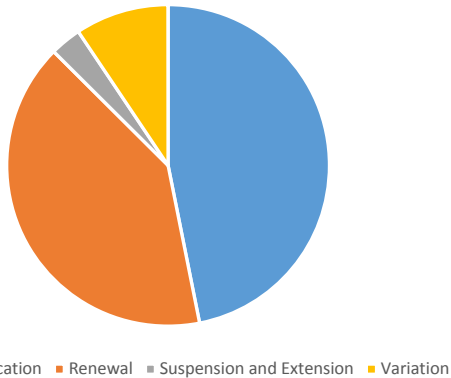


| Application Status       | Less than 30 | 30 to 60 | 61 to 100 | 101 to 200 | more than 200 | Total      |
|--------------------------|--------------|----------|-----------|------------|---------------|------------|
| Assessment               | 39           | 5        | 3         | 13         | 0             | 60         |
| Company (for response)   | 4            | 3        | 1         | 8          | 3             | 19         |
| Joint Authority (Cwlth)* | 1            | 0        | 0         | 6          | 1             | 8          |
| Joint Authority (State)  | 1            | 0        | 1         | 8          | 14            | 24         |
| <b>Total</b>             | <b>45</b>    | <b>8</b> | <b>5</b>  | <b>35</b>  | <b>18</b>     | <b>111</b> |

Joint Authority (Cwlth)\* includes Commonwealth Minister

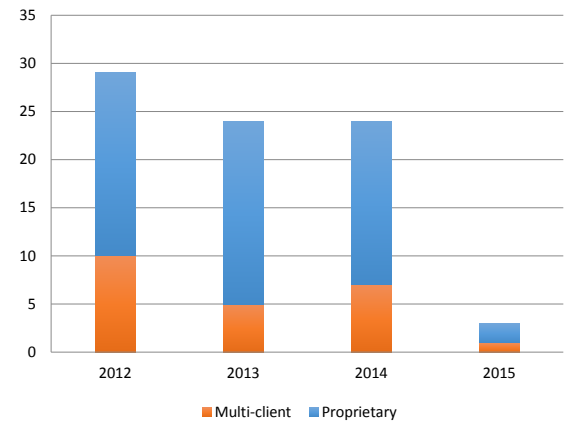
## Joint Authority for Decision

| Application Type         | Joint Authority (Cwlth)* | Joint Authority (State) | Total     |
|--------------------------|--------------------------|-------------------------|-----------|
| Initial Application      | 7                        | 8                       | 15        |
| Rate of Recovery         |                          |                         |           |
| Renewal                  | 0                        | 13                      | 13        |
| Surrender                |                          |                         |           |
| Suspension and Extension | 0                        | 1                       | 1         |
| Variation                | 1                        | 2                       | 3         |
| <b>Total</b>             | <b>8</b>                 | <b>24</b>               | <b>32</b> |



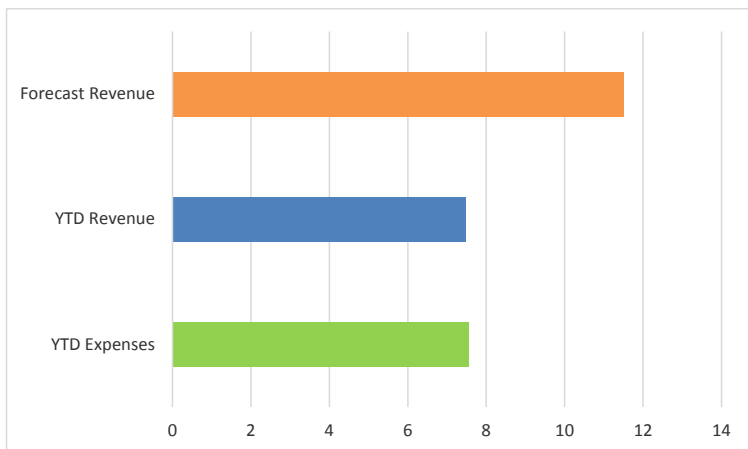
| Wells       | 2014 | Jan-15 | Feb-15 |
|-------------|------|--------|--------|
| Commenced   | 73   | 2      | 11     |
| In progress | 13   | 10     | 7      |
| Suspended   | 14   | 12     | 10     |
| Completed   | 83   | 5      | 5      |

## Surveys Completed

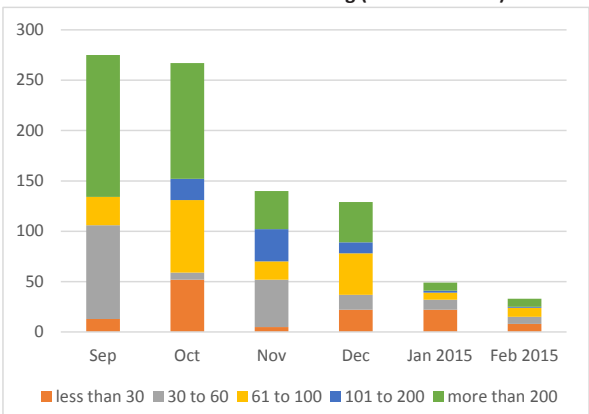


| Surveys     | 2014 | Jan-15 | Feb-15 |
|-------------|------|--------|--------|
| Commenced   | 24   | 3      | 0      |
| In progress | 4    | 2      | 5      |
| Suspended   | 1    | 0      | 0      |
| Completed   | 22   | 3      | 0      |

## Finance \$M



## Data Submissions Outstanding (last six months)



## Completed Applications

| Decision Maker               | In Progress | February 2015 Completed | Completed YTD |
|------------------------------|-------------|-------------------------|---------------|
| Applications for JA Decision | 82          | 226                     | 37            |
| Applications for TA Decision | 26          | 116                     | 111           |
| Commonwealth Minister (GHG)  | 3           | 0                       | 0             |
| <b>Total</b>                 | <b>111</b>  | <b>442</b>              | <b>148</b>    |